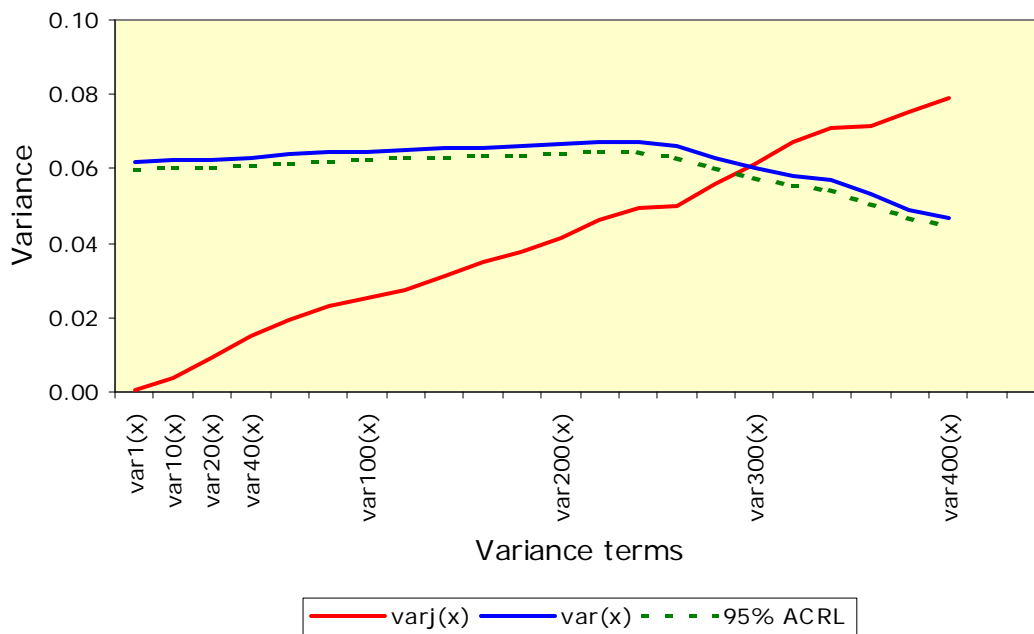


Sampling variogram for LoehleE&E2007



A 2000-Year Global Temperature Reconstruction Based on Non-Treering Proxies

Author: Dr Craig Loehle

Reprinted: Energy & Environment, Volume 18, No 7&8, 2007

This sampling variogram displays a lag of 294 years  
It is corrected for loss of degrees of freedom during reiteration